



PORTABLE DUAL MONITOR FOR LAPTOP

COMPACT THIN & LIGHT PORTABLE
DUAL MONITOR

USER MANUAL [ENGLISH](#)



Model: 3M1600S1

FHD

Full HD resolution
1920 x 1200

IPS

Super TFT
display

178°

Ultra Wide
Viewing Angle

16,7 M

16,7 Million
colors

2x

USB-C
connector

→|←

Thin stylish
design

→|←

Lightweight
materials

No part of this manual, including the products and software described in this manual, may be reproduced, transmitted, transcribed, stored in a data storage system, or translated into any language in any form and by any means, except for documentation stored by the Buyer for backup purposes without the written permission of MISURA Store s. r. o. ("MISURA").

The warranty for the product or service becomes void if: (1) the product is repaired, modified or altered without the written permission of MISURA or (2) the serial number of the product is illegible or missing.

The technical data and information in this manual are provided for information only, are subject to change at any time without notice, and should not be construed as a commitment by MISURA.

MISURA is not responsible for any errors or inaccuracies that may appear in this manual, including the products and software described in this manual.

SAFETY INFORMATION

- Read all supplied documentation carefully before preparing this portable USB-C monitor for use.
- To reduce the risk of fire or electric shock, do not expose this portable USB-C monitor to rain or moisture.
- Do not attempt to disassemble the cover of this portable USB-C monitor.
- Before using this portable USB-C monitor, make sure that all cables are connected properly.
- Avoid extremely dusty environments, changes in temperature and humidity. Do not place the portable USB-C monitor in areas where there is a risk of moisture/splashing.
- Do not allow objects or liquids to enter the holes / cutouts on the cover of the portable USB-C monitor.
- In the event of technical problems with the portable USB-C monitor, contact a qualified service technician or dealer.
- Do not dispose of this product in a fire.
- Do not use this monitor near heating devices or in places subject to high temperatures.
- Keep this monitor away from sharp objects.

CONTENT

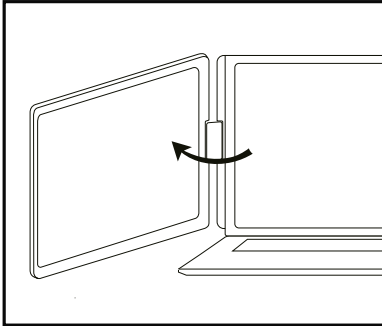
WARNINGS.....	4
PACKING LIST.....	4
INPUTS AND BUTTONS.....	5
SET UP.....	6
CONNECTION METHODS.....	6
OTHER MODES.....	8
DRIVER INSTALLATION.....	9
LAPTOP DISPLAY CONFIGURATION – WINDOWS.....	12
LAPTOP DISPLAY CONFIGURATION – MAC.....	13
SPECIFICATIONS.....	14
TROUBLESHOOTING (FAQ).....	15

WARNINGS

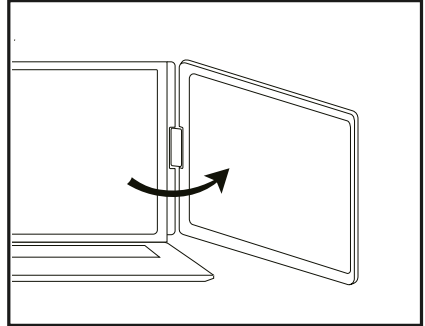
Please handle the Dual Monitor with care and do not press the screens to avoid damage. Do not exceed its maximum turning angle showing as below:

ROTATING ANGLE OF SCREENS:

Left screen (0° – 360°)

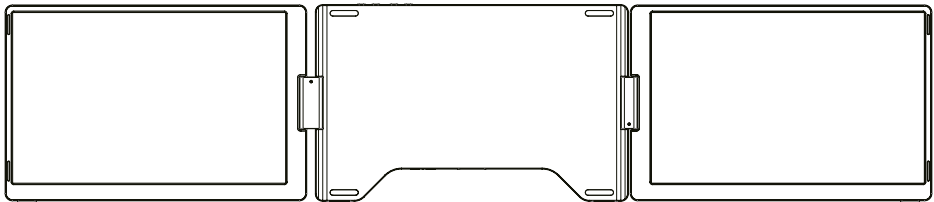


Right screen (0° – 360°)



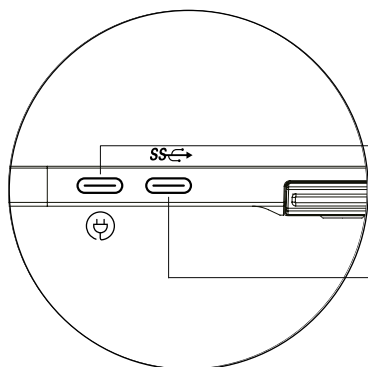
The Dual Monitor still consumes small amount of power when it's in standby mode. For energy saving, waste less and low carbon living style, it's highly recommended to remove cable connections when the Dual Monitor is not in use.

PACKING LIST



- 2×** | USB-A to USB-C cable
- 1×** | USB-C to USB-C cable
- 1×** | User manual
- 1×** | Carry bag
- 1×** | Flash drive (Including driver)

INPUTS AND BUTTONS

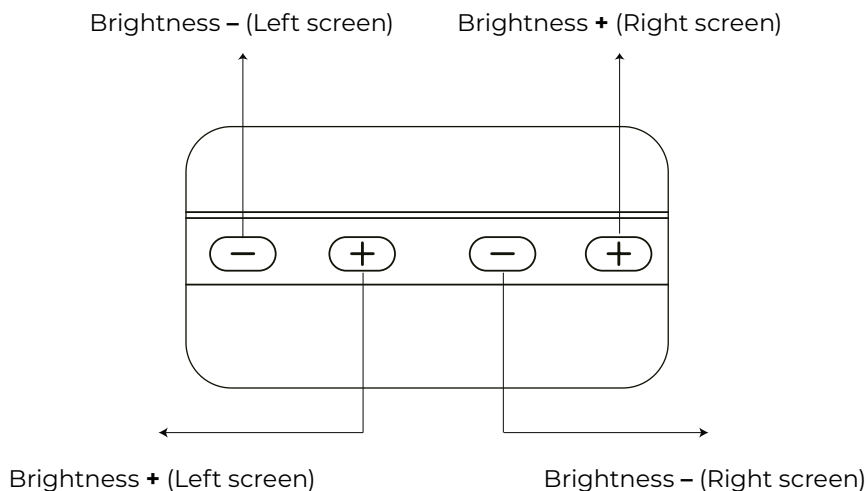


USB-C PD

If you want the monitor to charge your laptop you should use the power adapter with the minimum power of 45 W

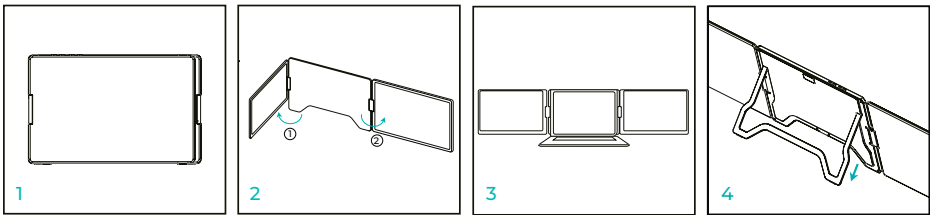
Full functional USB-C

(To receive video inputs from USB-A or USB-C ports)



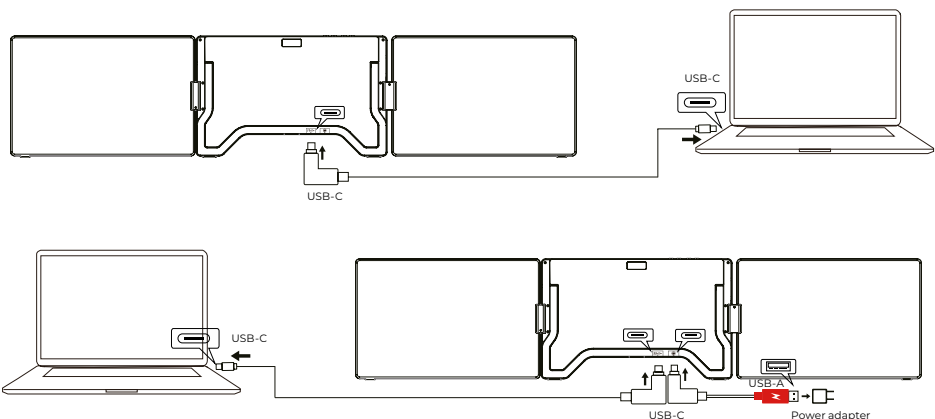
SET UP

1. Take Dual Monitor out of the box.
2. Open the two screens in the directions described in the figure 2.
3. Place the monitor on the table.
4. A stepless adjustable stand is embedded into the back of Dual Monitor. Lift the stand, press the button to stretch, and retract the stand. It can offer extra support to the Dual Monitor.
5. Using the necessary cables plug one end into the Dual Monitor and the other into your laptop. For long term use please plug DC 5V/3A (or PD power) external power adapter or laptop power supply (with Type C).



CONNECTION METHODS

1. Connecting the Dual Monitor by USB-C to USB-C cable

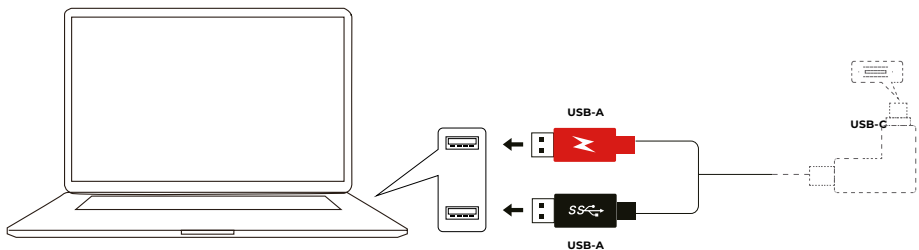


NOTE:

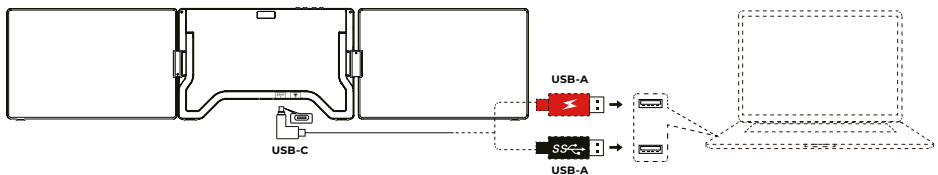
- After the driver is installed, the Dual Monitor can be powered by one cable as long as the output power is more than 10 W. If the output power of the laptop is lower than 10 W, external power supply is required for the Dual Monitor.

2. Connecting the Dual Monitor by 2 USB-A to USB-C cable

Step 1: Please connect both USB-A male connectors to laptop or adapter first.



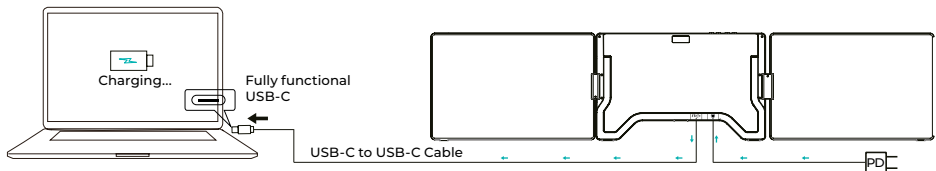
Step 2: Then connect the USB-C male connectors to the Dual Monitor.



OTHER MODES

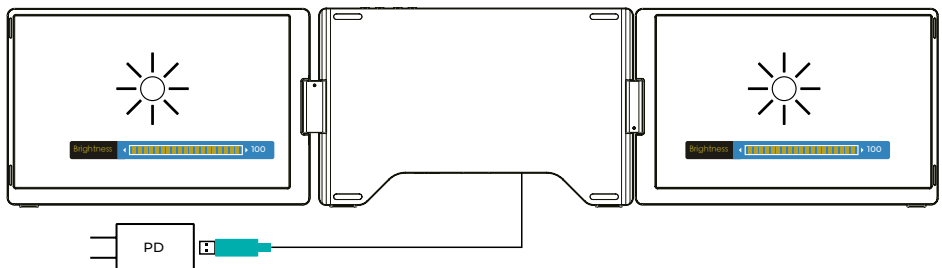
1. Reverse charging mode

When the Dual Monitor is connected with external power source (original power supply of laptop (with Type C)) and the laptop is connected to the Dual Monitor by fully functional USB-C port, the laptop can also be charged.

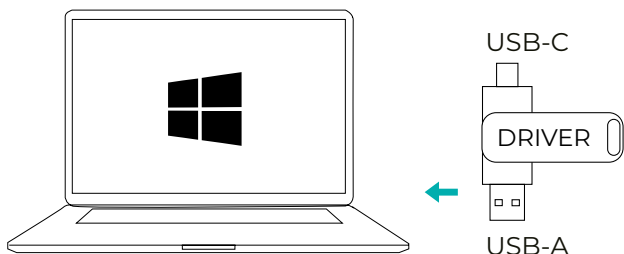


1. Brightening mode

1. Connect the laptop's fully functional USB-C port to the device via USB-C cable.
2. Connect the laptop power supply to the device (Power USB-C port) to start reverse charging of the laptop and automatically improve the screen brightness. (If your laptop charger is not USB-C end, please use another PD charger >45W)



DRIVER INSTALLATION



1. Windows 10 or higher versions

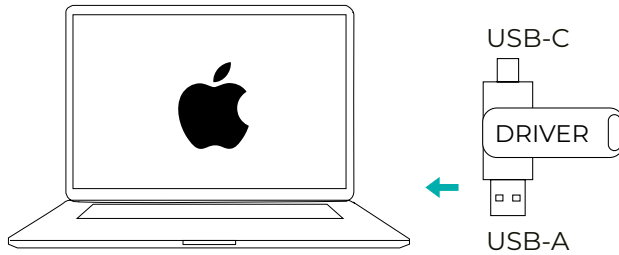
The driver will be automatically installed when the Dual Monitor is connected to your laptop via the USB-C or USB-A cable. Please ensure that your laptop is connected to the internet. After successful installation, restart the laptop to use it. If the driver can't be installed automatically, please install it manually.

2. Other Windows versions





- a. To load the driver, insert the flash drive into your laptop. The folder "Drivers" will be displayed on your laptop's desktop or in "My Computer (PC)". (Note: Please install the driver to the default folder.)
- b. Open the subfolder and double click the executive drivers and follow the instruction to complete driver installation.
- c. After successful installation, restart the laptop.
- d. Connect Dual Monitor with laptop then the Dual Monitor is ready to use.

REMARK: Windows 7

- a. When the Windows 7 driver cannot be installed properly, please operate your laptop as below:
Enter "Control Panel" ----- "System and Security" ----- "Windows update"
----- "Check for updates"
Update to the latest version.
- b. Open the "driver" folder and double click the executive drivers and follow the instruction to complete driver installation.
- c. After successful installation, restart the laptop.
- d. Connect Dual Monitor with laptop then the Dual Monitor is ready to use.

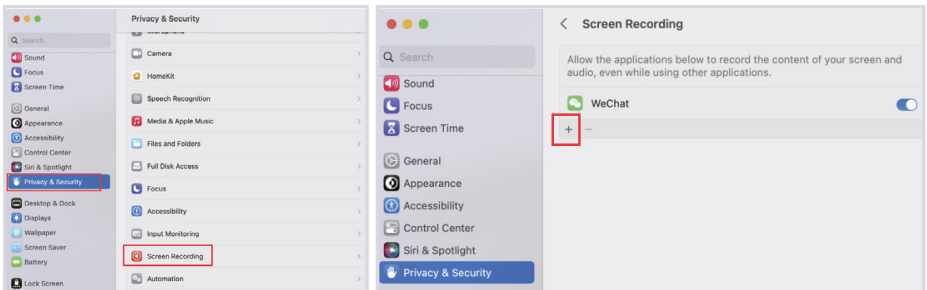


Mac:

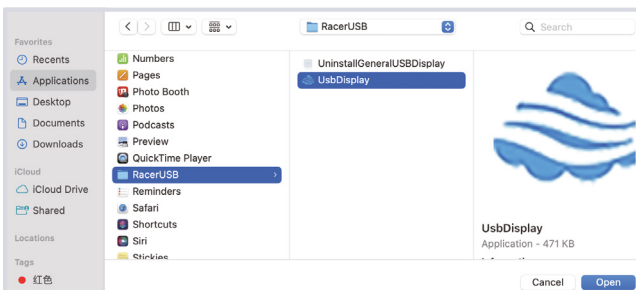
1. To load the driver, insert the flash drive into your laptop. The folder “Drivers” will be displayed on your laptop desktop.
2. Open the “Drivers” folder and find the “mac OS” .
3. Enter “System Preferences”  > “Security & Privacy” > “Screen Recording”  > “Unlock”  (Apple ID and password are required)> “Tick UsbDisplay” 
4. After successful installation, restart the laptop.
5. Connect Dual Monitor with laptop then the Dual Monitor is ready to use.

NOTE:

- When the driver cannot be found, please operate your Macbook as below:

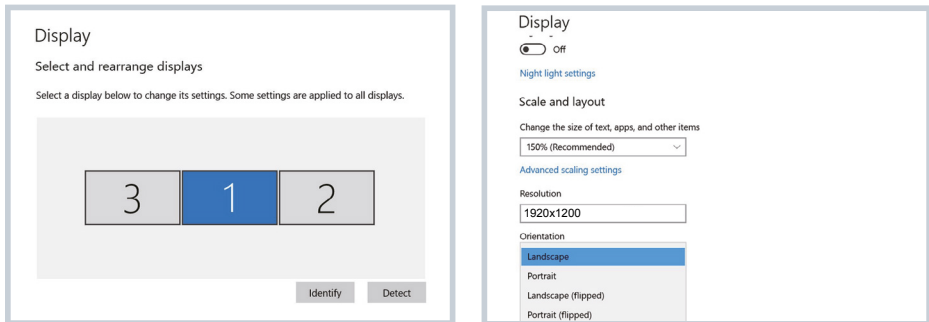




1. Enter "System Preferences"> "Security & Privacy"> "Screen Recording"
2. Click the "+" symbol as shown in the picture to add the driver
3. Click "Applications" > "RacerUSB" > "usbDisplay" > "Open"
4. Follow the steps to add the driver.
5. After successful installation, restart the laptop.
6. Connect Dual Monitor with laptop then the Dual Monitor is ready to use.



LAPTOP DISPLAY CONFIGURATION

WINDOWS

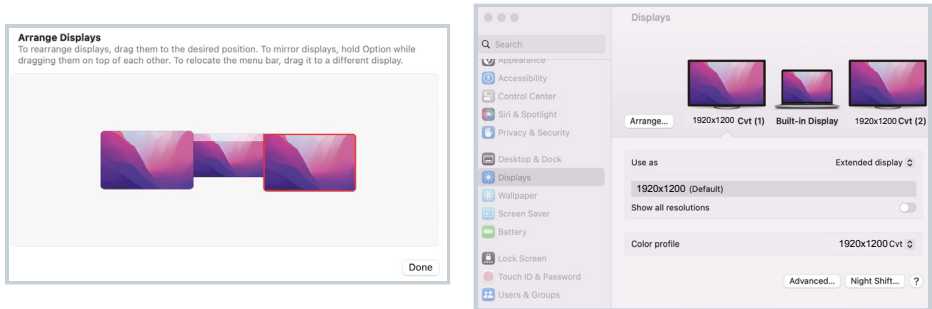


1. Go to your Display Settings (Start  Settings  System > Display)
2. Click to "identify", and the corresponding number will appear on each screen
3. Click and drag the numbered screens to the configuration as shown
4. If two screens appear to be together, such as 2/1, 2/3, etc., please select one of the screen then go to "Multiple Displays menu" to select "Extend desktop on this display"
5. To increase the zoom, click the "Change the size of text, apps, and other items" dropdown and select 150 %, or preferred zoom

Keeping the three displays synced can be configured in settings of graphic card. If there is any issue please consult local distributor.

LAPTOP DISPLAY CONFIGURATION

MAC



1. Open Displays Settings (> System Preferences > Displays)
2. Click "Arrangement" from display menu
3. Ensure that the "Mirror Displays" box is unchecked
4. Click each monitor icon and note on which of your screens a red frame appears
5. Click and drag the screen icons so that they are on the same side as the associated screens with a red frame

SPECIFICATIONS

Screen size	16"
Resolution	1920 × 1200
Aspect ratio	16:10
Backlight type	W-LED
Viewing Angle	178°
Touchscreen	NO
Contrast	800:1
Power source	5V 3A
Color gamut	72 % NTSC/ 100 % sRGB
Response time	20ms
Display color	16.7 Million Colors (8-bit)
Brightness	300cd/m ²
Type-C	1920 × 1200 (Video and Power)
Type-C	Power only
Product weight	1880 g

TROUBLESHOOTING (FAQ)

1. There is a black screen and no display after connection.

1.1 Confirm that the motherboard indicator light is on.

1.2 Check if the two ends of the connecting wire are plugged in place, and confirm that the laptop output power is enough to support the device.

2. The screen is not stable, flickers, or has intermittent black screen after connection.

2.1 Please check if the laptop output power. If its not enough to support the monitor connect an external power supply (Your laptop USB-C charger or DC5V / 3A or PD charger) to the device.

3. If your laptop doesn't have USB C port, how to use it?

3.1 You can connect the dual USB-A-C cable to the laptop's two USB-A ports. The black USB-A end connects to transmit data, and the red USB-A end connects to transmit power. But if your laptop has only one USB-A port, please connect the black USB-A end, then you can connect the red USB-A end to a charger. Or no need to use the red USB-A end, you can connect an external power supply (\geq DC5V / 3A or your laptop USB-C charger or PD charger) to our device directly. Finally, connect the dual USB-A-C cable C end to our device.

4. There is a boot LOGO, but no display after connecting to Macbook, how to solve it?

4.1 Check if the driver icon is on the top right corner of the laptop desktop; If it is not displayed, please enter the laptop startup platform to find the driver and click it to solve the problem.

5. Can the device charge the laptop when it connects to a power supply?

5.1 Necessary conditions:

1. Laptop's USB-C port supports power
2. Connect via USB-C cable.
3. Power supply is PD protocol.

5.1 Necessary conditions:

1. Connect the laptop's full function USB-C port to the device via USB-C cable
2. Connect the laptop power supply to the device (Power USB-C port)

to start reverse charging of the laptop and automatically improve the screen brightness. (If your laptop charger is not USB-C end, please use another PD charger >45W)

Declaration of conformity according to the EMC Directive 2014/30 / EC
on the harmonization of legal regulations of Member States related to
electromagnetic compatibility

Manufacturer / importer / distributor:

MISURA Store s.r.o.
K Poště 429/2
252 67 Tuchoměřice

Person responsible for completing the technical documentation:

Ing. Jiří Mihel – executive director of the company

Description and identification of machinery:

Title: portable dual monitor 16"
Model: 3M1600S1

The device described above has been tested in accordance with the below
standards and found to comply with the EMC 2014/30/ES. The observations
and test results given in this certificate are only relevant for the test sample.

**The product complies with the following European Community
regulations:**

Directive EN 55032: 2015 of the European Parliament and of the Council
- Electromagnetic compatibility of multimedia equipment – Emission
requirements.

Directive EN 55035: 2017 of the European Parliament and of the Council
- Electromagnetic compatibility of multimedia devices – Immunity
requirements.





Thank you for your purchase.
If necessary, contact us at:

Producer | Importer | Distributor

MISURA Store s. r. o.
ID: CZ264 03 714
www.misura.shop
info@misura.shop



We are not liable for any typographical errors.