



MH09

MAGNETIC WIRELESS POWER BANK

USER MANUAL [ENGLISH](#)



Model: P24P301B01



Built-in
cables



Hidden
Phone stand



Strong
MagSafe



Pass Through
Technology

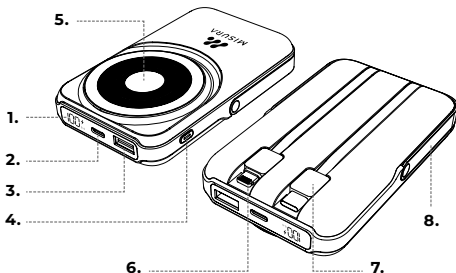
CONTENT

CONTENT.....	2
PACKING LIST.....	2
PRODUCT FEATURES.....	3
OPERATING INSTRUCTIONS.....	4
TROUBLESHOOTING.....	6
CAUTIONS.....	7
PARAMETERS.....	8

PACKING LIST

- 1×** | Power Bank
- 1×** | Charging Cable
- 1×** | User manual

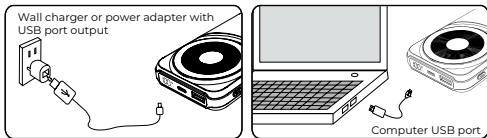
PRODUCT FEATURES



1. Digital Display
2. Type-C Input & Output
3. USB-A Output
4. Power Button
5. Wireless Charger for Phone / Watch & Magnetic Adsorption Ring
6. Built-in Lightning Cable Output
7. Built-in Type-C Cable Output
8. Hidden Stand
9. Pass Through Technology: charge powerbank and your phone at the same time

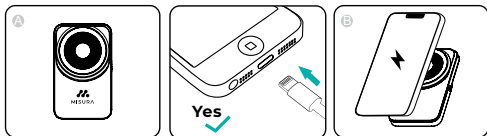
OPERATING INSTRUCTIONS

Charging the Power Bank



1. Connect the Type-C cable (included) between power bank and the wall charger or power adapter (not included). It will start charging automatically. It's recommended to use the PD18W wall charger or power adapter to match the fast charging.
2. Fully charge the power bank before using the power bank for the first time. Recharge the power bank once every three months when not in use or seldom used.
3. During charging the power bank, the digital display will flash and indicate the available battery capacity percentage. If it is fast charging, the icon will light up. When fully charged, the digital display will be 100. If the digital display does not match the actual battery level, please use or discharge it to 00, and then charge it to 100. After 2 or 3 discharging and charging cycles, The digital display will accurately indicate the battery level.

Charging the device



1. Wired charging

Press the power button, the digital display is on. Connect the charging cable between the power bank and your device to start charging. Built-in Type-C cable and Lightning cable can directly charge the device after pressing the power button. During charging the device, the digital display is always on. If it is fast charging, the icon will light up.

2. Wireless charging for phone

Place the device in the center of the wireless charging area. If your device supports MagSafe technology, the power bank will automatically hold it thanks to strong magnets. Press the power button, the digital display is on, the icon will light up, which means wireless charging is in progress. If it is fast wireless charging, the icon will light up.

P.S., Make sure your device is fit for Qi standard receiving equipment.

3. Wireless charging for Apple watch

Place the watch in the center of the watch charger. Press the power button, it will start charging the watch. During charging the watch, the digital display is on.

TROUBLESHOOTING

- 1.** If the digital display does not match the actual battery level, please use or discharge it to 00, and then charge it to 100. After 2 or 3 discharging and charging cycles, The digital display will accurately indicate the battery level.
- 2.** Press the power button, if the digital display is 00, it means the battery is running out, please recharge immediately.
- 3.** This power bank can automatically identify equipment that needs charging. If no device is being charged, the power bank will be turned off after 30 seconds.
- 4.** For wireless charging, your device must be equipped with a Qi wireless receiver. The device can automatically identify a Qi-compatible device placed on it. If the center point of the receiving terminal is deflected over 8mm from the center point of transmitting terminal, the power bank will turn off automatically.
- 5.** If wired charging is not working properly, please change to a different charging cable, since the connector may become loose due to wearing out.
- 6.** During charging, the device may become warm due to high currents and resistance, especially during wireless charging. To reduce temperature, avoid running intensive applications or using GPS on your mobile device when charging.

CAUTIONS

- 1.** The power bank will generate heat when charging.
Always charge in a well-ventilated and open-air area.
- 2.** Do not charge under pillows, blankets, clothing or on flammable surfaces. Keep the power bank away from heat sources, direct sunlight, combustible gas, humidity, water or other liquids.
- 3.** Do not disassemble, open, microwave, incinerate, paint or insert foreign objects into the power bank.
- 4.** Do not subject the power bank to mechanical shock such as crushing, bending, puncturing or shredding. Avoid dropping or placing heavy objects on the power bank.
- 5.** Do not short-circuit the power bank or store it in a receptacle where it may be short-circuited by other metallic or conductive objects.
- 6.** Do not operate the power bank if it has been wet or damaged, to prevent against electric shock, explosion and/or injury.
- 7.** Keep the power bank dry to avoid short circuits or other damage to electronical components.
- 8.** Keep the power bank away from high heat and flammable liquids and gasses. Avoid using in environment temperature above 45°C or below 0°C.

PARAMETERS

Model NO	P24P301B01
Battery Capacity	10000mAh 38.5Wh
Type-C Input	12V \equiv 1.5A, 9V \equiv 2A, 5V \equiv 3A
Type-C Output	12V \equiv 1.67A, 9V \equiv 2.22A, 5V \equiv 3A
USB-A Output	12V \equiv 1.5A, 9V \equiv 2A, 5V \equiv 4.5A
Type-C Cable Output	5V \equiv 2.1A
Lightning Cable Output	5V \equiv 2A (MAX)
Watch Charger	2.5 W
Dimensions	113.4 × 68.6 × 22 mm

Copyright® 2025 MISURA Store s. r. o. All rights reserved.

No part of this manual, including the products and software described in this manual, may be reproduced, transmitted, transcribed, stored in a data storage system, or translated into any language in any form and by any means, except for documentation stored by the Buyer for backup purposes without the written permission of MISURA Store s. r. o. ("MISURA").

The warranty for the product or service becomes void if: (1) the product is repaired, modified or altered without the written permission of MISURA or (2) the serial number of the product is illegible or missing.

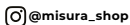
The technical data and information in this manual are provided for information only, are subject to change at any time without notice, and should not be construed as a commitment by MISURA.

MISURA is not responsible for any errors or inaccuracies that may appear in this manual, including the products and software described in this manual.



Producer / Importer / Distributor

MISURA Store s. r. o.
ID: CZ264 03 714
www.misura.shop
info@misura.shop



We are not liable for any typographical errors.