



MH11

3-IN-1 WIRELESS CHARGING STAND

USER MANUAL [ENGLISH](#)



Model: P25T8W01, P25T8B01



Multiple device
charger



Qi2 charging
standard



Strong
MagSafe



Overcharge
protection

Copyright® 2025 MISURA Store s.r.o. All rights reserved.

No part of this manual, including the products and software described in this manual, may be reproduced, transmitted, transcribed, stored in a data storage system, or translated into any language in any form and by any means, except for documentation stored by the Buyer for backup purposes without the written permission of MISURA Store s.r.o. ("MISURA").

The warranty for the product or service becomes void if:
(1) the product is repaired, modified or altered without the written permission of MISURA or (2) the serial number of the product is illegible or missing.

The technical data and information in this manual are provided for information only, are subject to change at any time without notice, and should not be construed as a commitment by MISURA.

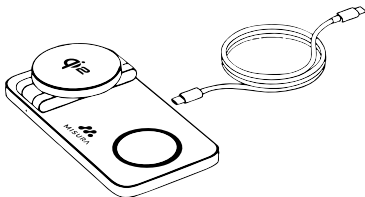
MISURA is not responsible for any errors or inaccuracies that may appear in this manual, including the products and software described in this manual.

CONTENT

TURN ON THE POWER	3
FOLD UP AND ADJUST VIEWING ANGLE.....	3
DEVICES	4
INDICATOR LIGHT AND FOD INSTRUCTIONS	4
MAGSAFE COMPATIBILITY	5
PACKING LIST	5
PARAMETERS	6
SUITABLE CHARGING EQUIPMENT	6
SAFETY INSTRUCTIONS	7
FEDERAL COMMUNICATIONS COMMISSION INTERFERENCE STATEMENT	8
RADIATION EXPOSURE STATEMENT	9

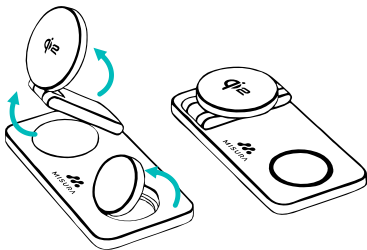
TURN ON THE POWER

Connect the USB-C cable to the power adapter and plug it into an outlet.



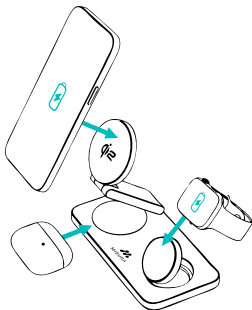
FOLD UP AND ADJUST VIEWING ANGLE

Adjust the watch charging panel for easy access.



DEVICES

Place your devices on their respective charging areas.



INDICATOR LIGHT AND FOD INSTRUCTIONS

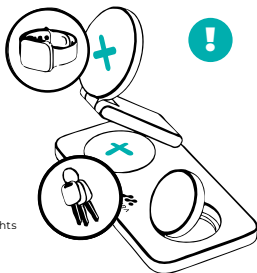
Place your devices on their respective charging areas.

Charge the Apple Watch only on the designated spot.
Do not place foreign objects on the charging area.



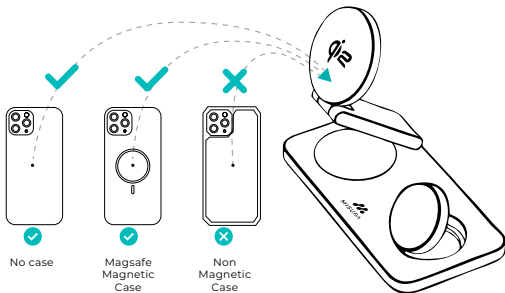
- ☀ Power Off: No light
- ☀ Power On: Green light
- ☀ Phone Charging: Blue light

☀ Error or FOD: Blue and green lights alternately flashing



MAGSAFE COMPATIBILITY

To ensure MagSafe compatibility, your phone needs to be from the iPhone 12 series or later. The phone can be used bare or with a compatible magnetic case. Non-magnetic cases will block the magnetic connection, preventing the phone from staying attached to the charging pad.



PACKING LIST

- 1x | Wireless charger
- 1x | USB C to C Cable
- 1x | User manual
- 1x | Power adapter

PARAMETERS

Model NO	P25T8W01 P25T8B01
Name	3-in-1 Wireless Charging Pad
Input	9V=2A, 9V=2.7A, 12V=2A
Wireless Output for phone	15W (Max)
Wireless Output for AirPods	5W (max)
Wireless Output for iWatch	3W (max)
Material	ABS+PC
Product size	150 × 75 × 29.6 mm
Wireless charging effective distance	≤5mm

SUITABLE CHARGING EQUIPMENT

Apple Watches: Series 9, 8, 7, 6, 5, 4, 3, 2, 1, Ultra, SE
Earbuds: Wireless earbuds such as AirPods Pro, AirPods with wireless charging case, and other Qi-compatible earbuds.

SAFETY INSTRUCTIONS

WARNING: Failure to follow these instructions could result in fire, electric shock, injury, or damage to the user, product, or other property.

1. Connect the power supply of the wireless charger into a power outlet that is close by and easy to disconnect from the source.
2. Use indoors and in a dry location only; avoid charging near sources of heat and humidity.
3. Keep the wireless charger and power supply away from any liquids or moisture.
4. Unplug the wireless charger when not in use for long periods of time.
5. Do not store your device in very hot or very cold locations. It is recommended to use your device at room temperature.
6. Do not use if visible defects are observed on the wireless charger or power supply.
7. Do not attempt to service, modify, or disassemble the wireless charger or power supply.
8. Use of a power supply not recommended or sold by Powpact may result in an increased risk of fire, electric shock, injury, or damage to the user, product, or other property.
9. Wireless charging power transmission rate is regulated by the wireless charging device receiving power, which can be influenced by factors like proprietary charging

protocols, ambient temperature, current battery percentage level, and age of the device being charged.

10. Avoid using the product in humid, dusty, or high-temperature environments.
11. When not in use for a long time, unplug the power supply and cut off the power.
12. Ensure proper alignment of devices on the charging areas to avoid overheating and inefficiencies

CAUTION: If you experience problems with the wireless charger, please discontinue use, unplug the power supply from the AC socket, and contact Powpact for assistance

FEDERAL COMMUNICATIONS COMMISSION INTERFERENCE STATEMENT

This equipment has been tested and found to comply with the limits for a Class B digital device, pursuant to Part 15 of the FCC Rules. These limits are designed to provide reasonable protection against harmful interference in a residential installation. This equipment generates, uses, and can radiate radio frequency energy, and if not installed and used in accordance with the instructions, may cause harmful interference to radio communications. However, there is no guarantee that interference will not occur in a particular installation. If this equipment does cause harmful interference to radio or television reception, which can be determined by turning the equipment off and on, the user is encouraged to try and correct the interference by one or more of the following measures:

- Reorient or relocate the receiving antenna.
- Increase the distance between the equipment and the receiver.
- Connect the equipment to an outlet on a circuit different from that to which the receiver is connected
- Consult the dealer or an experienced radio/TV technician for help.

FCC Caution: Any changes or modifications not expressly approved by the party responsible for

compliance could void the user's authorization to operate this equipment.

RADIATION EXPOSURE STATEMENT

This equipment should be installed and operated with a minimum distance of 20 cm between the charger and your body.



Thank you for your purchase.
If necessary, contact us at:

Producer / Importer / Distributor

MISURA Store s. r. o.
ID: CZ264 03 714
www.misura.shop
info@misura.shop



We are not liable for any typographical errors.